

Milk Production

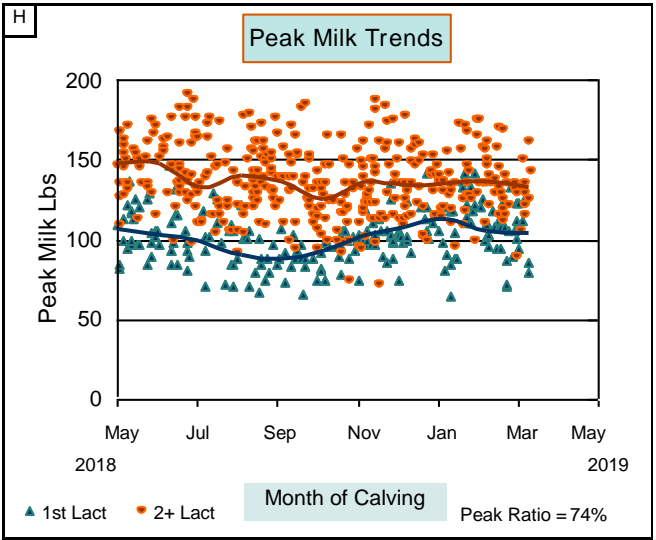
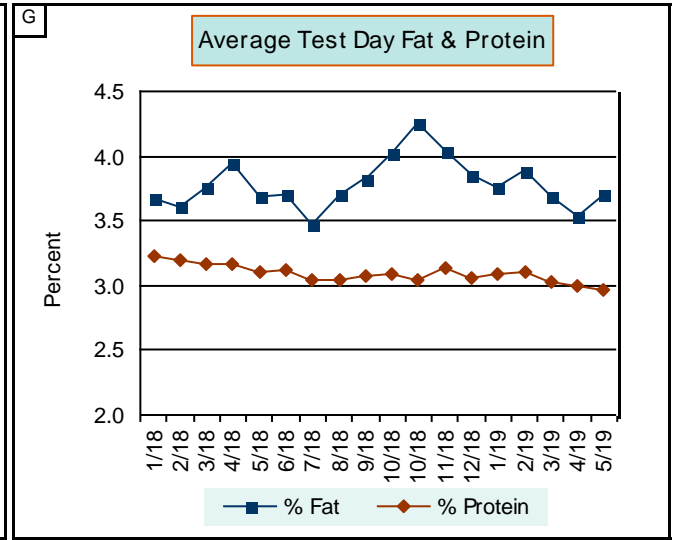
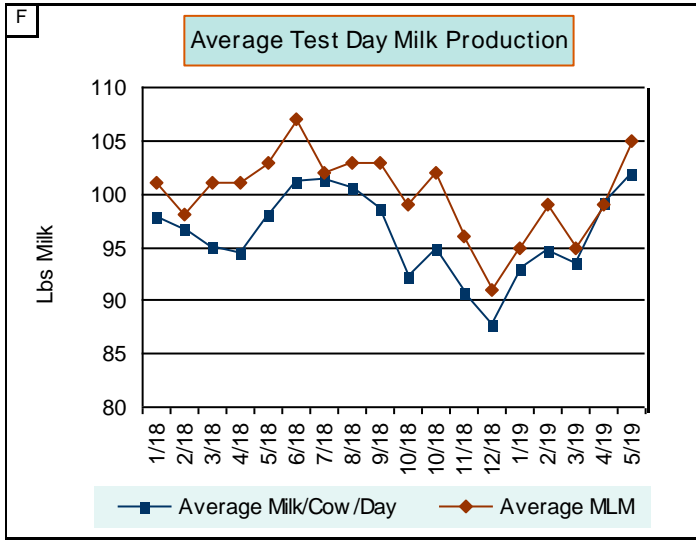
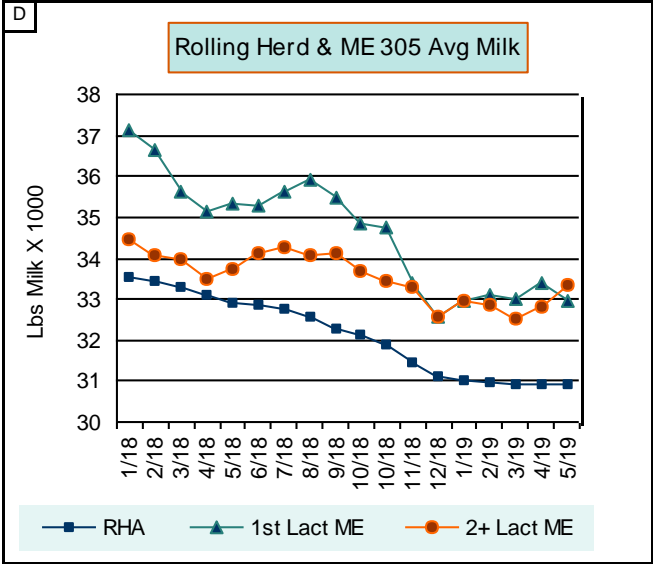
| Test Day Average Production | | | | | | | | | | | Rolling Herd Averages | | | | | | | | |
|-----------------------------|-------|------|-------------------|-------|-----|-------|-------|-------|-----|------|-----------------------|------|------|-------|------|------|------|------|---------|
| Test Date | Cows | | Milking Cows Only | | | | | | | | Entire Herd | | | | | | | | |
| | Total | Milk | DIM | %LacD | MLM | Milk | % Fat | % Pro | SCC | MUN | Cd | Cows | LDIM | Milk | %Fat | Fat | %Pro | Pro | Chs Yld |
| Avg | 689 | 597 | 172 | 89 | 100 | 96.3 | 3.79 | 3.06 | 109 | 11.9 | | | | | | | | | |
| 05 14 | 726 | 609 | 171 | 86 | 105 | 102.0 | 3.71 | 2.96 | 120 | 14.7 | 3 | 688 | 324 | 30929 | 3.80 | 1176 | 3.08 | 951 | 3177 |
| 04 16 | 721 | 614 | 170 | 89 | 99 | 99.1 | 3.53 | 2.99 | 136 | 9.5 | 3 | 684 | 325 | 30907 | 3.82 | 1180 | 3.09 | 954 | 3188 |
| 03 19 | 717 | 630 | 170 | 91 | 95 | 93.6 | 3.68 | 3.03 | 101 | 12.5 | 3 | 679 | 325 | 30919 | 3.84 | 1186 | 3.10 | 958 | 3203 |
| 02 19 | 700 | 622 | 171 | 91 | 99 | 94.8 | 3.88 | 3.10 | 102 | 10.5 | 3 | 675 | 325 | 30957 | 3.83 | 1185 | 3.11 | 962 | 3207 |
| 01 22 | 690 | 612 | 169 | 90 | 95 | 93.0 | 3.76 | 3.09 | 111 | 12.3 | 3 | 671 | 324 | 31002 | 3.82 | 1183 | 3.12 | 966 | 3209 |
| 12 25 | 689 | 607 | 166 | 90 | 91 | 87.9 | 3.85 | 3.06 | 103 | 12.5 | 3 | 668 | 324 | 31114 | 3.81 | 1185 | 3.13 | 973 | 3222 |
| 11 27 | 679 | 588 | 167 | 88 | 96 | 90.8 | 4.04 | 3.13 | 80 | 11.9 | 3 | 665 | 324 | 31448 | 3.80 | 1194 | 3.13 | 984 | 3252 |
| 10 30 | 668 | 581 | 168 | 88 | 102 | 94.9 | 4.25 | 3.05 | 79 | 11.9 | 3 | 663 | 325 | 31897 | 3.77 | 1203 | 3.13 | 999 | 3287 |
| 10 07 | 668 | 576 | 172 | 89 | 99 | 92.3 | 4.03 | 3.09 | 89 | 13.1 | 3 | 662 | 325 | 32113 | 3.75 | 1204 | 3.13 | 1006 | 3298 |
| 09 06 | 680 | 583 | 174 | 87 | 103 | 98.6 | 3.82 | 3.07 | 132 | 11.4 | 3 | 661 | 325 | 32295 | 3.74 | 1206 | 3.13 | 1011 | 3308 |
| 08 07 | 677 | 574 | 176 | 87 | 103 | 100.7 | 3.70 | 3.05 | 99 | 11.8 | 3 | 660 | 326 | 32565 | 3.73 | 1214 | 3.12 | 1018 | 3331 |
| 07 09 | 685 | 586 | 179 | 88 | 102 | 101.5 | 3.47 | 3.05 | 147 | 10.5 | 3 | 658 | 326 | 32758 | 3.72 | 1218 | 3.12 | 1022 | 3342 |
| Dropped (4/17) | 664 | 587 | 173 | 90 | 101 | 94.6 | 3.95 | 3.17 | 106 | 13.7 | 3 | 653 | 325 | 33118 | 3.71 | 1229 | 3.11 | 1029 | 3369 |

Did You Know?
 How are your animals performing? Block E gives you a detailed picture of your herd's production, dividing your animals into three lactation groups. 1st, 2nd, 3rd+. Monitor persistency levels to get a snapshot of how each group is doing. All groups from 1-100 DIM should be at 100-110% of last test, mid-lactation at 95-100% and late lactation from 90-95%.

For assistance, contact your DHI Association or Region at (608) 497-3518.

| Cows Currently in the Herd - Averages | | | | | | | | | | | | | | | | |
|---------------------------------------|-----------|--------------------------|------|------|---------|-----------|------|----------------------|-------|-------|----------------------|-------|-------|-------------------|------|-------|
| Lact Group | Cow Lacts | 305 Day ME Lactation Avg | | | Age Mos | Peak Milk | MUN | Early (1 - 100 Days) | | | Mid (101 - 240 Days) | | | Late (241 + Days) | | |
| | | Milk | Fat | Pro | | | | Num | Milk | %Last | Num | Milk | %Last | Num | Milk | %Last |
| 1st Lact | 271 | 32970 | 1260 | 984 | 21.9 | 101 | 14.7 | 78 | 93.5 | 116 | 93 | 92.8 | 91 | 54 | 83.5 | 101 |
| 2nd Lact | 211 | 34070 | 1251 | 1017 | 34.0 | 132 | 14.6 | 53 | 127.5 | 120 | 78 | 112.6 | 103 | 55 | 83.1 | 91 |
| 3+ Lact | 237 | 32711 | 1245 | 964 | 57.0 | 144 | 14.8 | 53 | 125.9 | 113 | 93 | 116.3 | 105 | 52 | 78.2 | 85 |
| All | 719 | 33207 | 1253 | 987 | 37.0 | 125 | 14.7 | 184 | 112.6 | 116 | 264 | 106.9 | 99 | 161 | 81.6 | 92 |
| Breed Average | | 26128 | 1004 | 792 | 42.2 | 97 | | | 86.3 | 111 | | 77.1 | 97 | | 60.8 | 92 |

| Milk Shipped |
|--------------------|
| Bulk Tank 61652 |
| DHI Weight 61721 |
| % of Bulk Tank 100 |
| Prev Mo Bulk % 100 |
| 4 Mo Avg Bulk % 99 |
| Milking Freq 3 |



Reproduction & Genetics

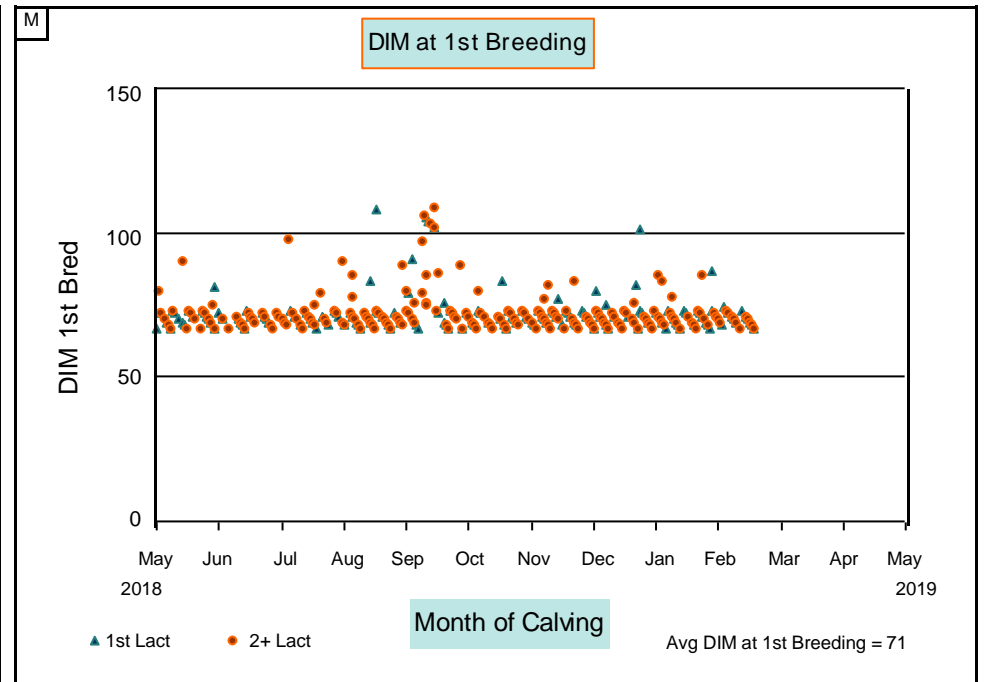
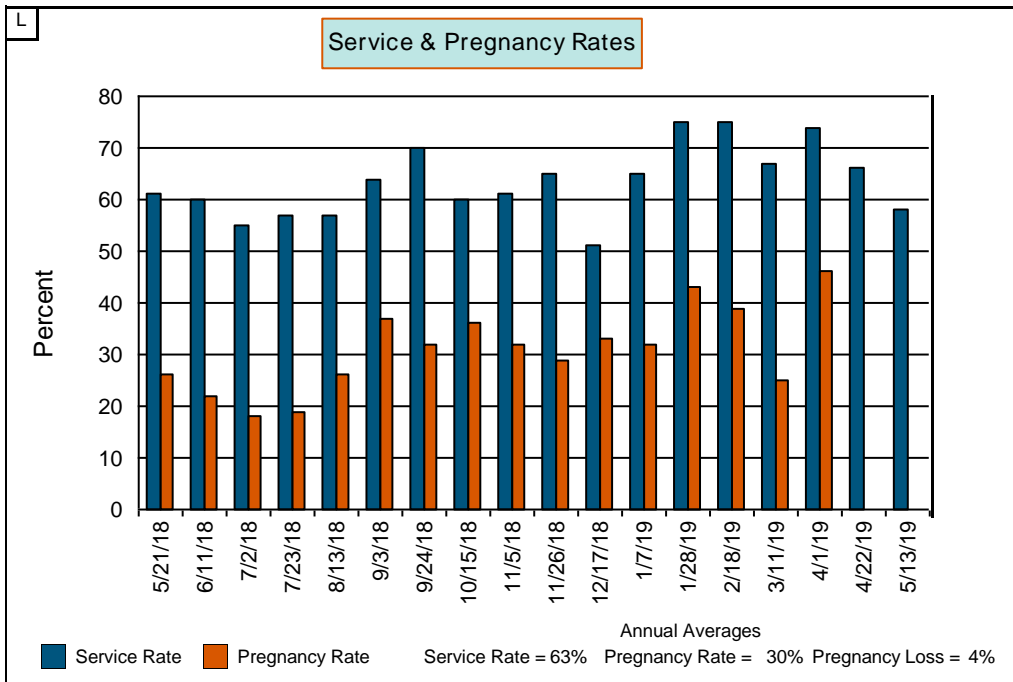
Name MYAGSOURCE OWNER
 Test Date 5/14/2019 Herd Code 35999909

MAY 2019

| General Reproductive Info | | | | | |
|---------------------------|----------------|---------------|----------|--------------|---------|
| Calv Int, Proj | Calv Int, Hist | Days Open, PG | | SPC, PG | |
| 12.6 | 12.6 | 105 | | 1.7 | |
| Repeat Breeding Analysis | | 3 - 17 Days | | 18 - 24 Days | |
| % Total Repeats | | 3 | | 21 | |
| Conception Rate % | | 14 | | 45 | |
| Conception Rates: | | Heifers | 1st Lact | 2nd Lact | 3+ Lact |
| | | 64 | 56 | 56 | 55 |
| Days Dry | | | VWP | | |
| Avg | 0 - 39 | 40 - 70 | > 70 | Calculated | Stated |
| 54 | 2% | 96% | 2% | 67 | 55 |

| Service & Pregnancy Rate By Cycle | | | | | | | |
|-----------------------------------|-----------|------|------------|-----------|------|-------------|-------------|
| 21 Day Cycle | Bred Elig | Bred | Svc Rate % | Preg Elig | Preg | Preg Rate % | Preg Loss % |
| 1 | 549 | 528 | 96 | 473 | 219 | 46 | 5 |
| 2 | 291 | 208 | 71 | 247 | 97 | 39 | 3 |
| 3 | 164 | 84 | 51 | 141 | 36 | 26 | 3 |
| 4 | 122 | 87 | 71 | 106 | 47 | 44 | 6 |
| 5 | 69 | 27 | 39 | 60 | 12 | 20 | 8 |
| 6 | 49 | 29 | 59 | 42 | 13 | 31 | 0 |

| Genetic Value of Sires | | | | | | | |
|------------------------|-----------|--------|------|------|-----------|--------------|-----------------|
| Genetic Group | Total Num | Pct AI | DPR | SCS | Prod Life | Net Merit \$ | Cheese Merit \$ |
| Service Sires | 443 | 100 | +1.8 | 2.73 | +6.4 | +851 | +881 |
| Heifers | 591 | 97 | +1.4 | 2.80 | +5.5 | +683 | +702 |
| 1st Lact | 272 | 100 | +1.6 | 2.78 | +5.0 | +637 | +662 |
| 2nd Lact | 215 | 100 | +1.5 | 2.78 | +4.4 | +516 | +536 |
| 3+ Lact | 239 | 100 | +1.4 | 2.80 | +3.6 | +411 | +428 |
| All Cows | 726 | 100 | +1.5 | 2.79 | +4.4 | +527 | +548 |
| Breed Avg | | 85 | +0.4 | 2.89 | +2.0 | +285 | +294 |



Inventory

| Calving - Past 12 Months | | | | | | |
|--------------------------|----------|----------|----------|----------|----------|----------|
| Lact | Male | | | Female | | |
| | Pct Live | Num Live | Num Dead | Pct Live | Num Live | Num Dead |
| 1st | 94 | 66 | 4 | 95 | 186 | 9 |
| 2nd | 96 | 103 | 4 | 96 | 109 | 5 |
| 3+ | 95 | 156 | 8 | 96 | 133 | 6 |
| All | 95 | 325 | 16 | 96 | 428 | 20 |

| Cows Leaving The Herd - Past 12 Months | | | | | | | | | | | | |
|---|---------|-----|------|-----|------------------|----------|-------|----------|----------|------|-----------|-------|
| Lact | Entered | | Left | | Reason - Percent | | | | | | | |
| | Num | Pct | Num | Pct | Dairy | Low Prod | Repro | Inj/Sick | Mastitis | Died | Feet/Legs | Dispo |
| 1st | 280 | 108 | 26 | 10 | 1.2 | 1.2 | 3.8 | 3.1 | | 0.8 | | |
| 2nd | | | 64 | 34 | 2.6 | 5.8 | 15.3 | 8.4 | 0.5 | 1.1 | | |
| 3+ | | | 126 | 53 | 10.1 | 4.6 | 12.2 | 17.6 | 4.2 | 4.2 | | |
| All | 280 | 41 | 216 | 31 | 4.6 | 3.6 | 9.9 | 9.6 | 1.6 | 2 | | |
| Avg Cow Count : 1st Lact = 260 2nd Lact = 190 3+ Lact = 238 All = 689 | | | | | | | | | | | | |

| Projected Herd Inventory - Next 6 Months | | | | | | |
|--|-----|-----|-----|-----|-----|-----|
| Month | Jun | Jul | Aug | Sep | Oct | Nov |
| Milking Cows | 621 | 622 | 633 | 638 | 659 | 654 |
| Dry Cows | 105 | 105 | 108 | 108 | 103 | 115 |
| Calving Cows | 47 | 51 | 50 | 57 | 50 | 57 |
| Cows to Dry | 48 | 55 | 51 | 53 | 63 | 68 |
| Calving Hfrs | 18 | 31 | 22 | 33 | 24 | 22 |